



# HOMESWORK CHECKLIST

---

## LESSON 1

- PRINT AND PREP TEMPLATES
- LAMINATE EXTRA-FINE CREPE PAPER  
USING BLUSH, LILAC, AND FERN

CUT ALL CREPE FOR 1-3 EACH FOR:

- BLUSH JAPANESE ANEMONE
- PINK LEMONADE TULIP
- LILAC CLEMATIS
- PINK COSMOS
- WHITE SWEET PEAS

## LESSON 2

FINISH 1-3 CENTERS EACH OF:

- ANEMONE       TULIP
- CLEMATIS       COSMOS

## LESSON 3

COMPLETE 1-3 SETS OF PETALS FOR:

- ANEMONE       TULIP
- CLEMATIS       COSMOS
- SWEET PEA STEM

## LESSON 4

ATTACH PETALS OF:

- ANEMONE       TULIP
- CLEMATIS       COSMOS
- SWEET PEA STEM

MAKE 1-3 BUDS EACH FOR:

- ANEMONE       COSMOS

## LESSON 5

COMPLETE LEAVES FOR :

- ANEMONE       TULIP
- CLEMATIS       COSMOS
- SWEET PEA

## LESSON 6

ADD SEPALS & FINISH STEMS:

- ANEMONE       TULIP
- CLEMATIS       COSMOS
- SWEET PEA

## LESSON 7

- MAKE 1-3 CLAIRE DE LUNE PEONIES

## LESSON 8

- CREATE 1-3 STEMS OF HYPERICUM BERRIES

## LESSON 9

- MAKE 1-3 BRANCHES OF SMOKE BUSH

## LESSON 10

- CREATE 3-9 STEMS OF ENGLISH LAVENDER

## LESSON 11

- DESIGN AN ASYMMETRICAL WREATH
- CREATE A POTTED TULIP

## LESSON 12

- DESIGN A FLOWER ARRANGEMENT

---

# LIA GRIFFITH CREPE PAPER

---



- Also called **DOUBLETTE**, Duplex, and Gloria
- Perfect for flatter or larger petals that need **LESS STRETCH**
- Paper has a smooth, **VELVET-LIKE FINISH** with two layers of thickness
- Each side has a slightly **DIFFERENT SHADE**, giving depth to petals
- You can make double-sided or **LAMINATED** crepe paper by fusing 2 layers of extra-fine



- **130% STRETCH** with a smooth, fabric-like texture
- Perfect for **DELICATE PETALS** with transparent look and lighter texture
- Fuse 2 layers together for **DIY** double-sided crepe paper
- Glue thin wire at center of petals or leaves to **ADD STRUCTURE**



- **250% STRETCH** with no machine lines
- Perfect for large flowers and heavier petals as it **HOLDS SHAPE** well
- Also called floristic crepe paper and is **GREAT FOR BEGINNERS**
- Paper has deeper grooves, giving additional **STIFFNESS AND TEXTURE**



---

## CUTTING CREPE PAPER

---

### TOOLS & MATERIALS FOR THIS LESSON

- CRAFT SCISSORS
  - DETAIL SCISSORS
  - NEEDLE-NOSE TWEEZERS
  - MINI CLIPS
  - CUTTING MACHINE WITH ROTARY BLADE (*optional*)
  - IRON *or* EASY PRESS
  - IRONING BOARD *or* WOOL FELT PRESSING MAT
- 
- FUSIBLE WEB
  - CARDSTOCK *for templates*
- 
- EXTRA-FINE CREPE PAPER– *linen, blush, camellia, fern, cypress, lavender, olive (or juniper)*
  - HEAVY CREPE PAPER– *chiffon, honeysuckle, nectarine*
  - DOUBLE-SIDED CREPE PAPER– *fern+moss*
- 

### THE IMPORTANCE OF THE GRAIN

Every template piece is marked with grain lines. This grain line mark will inform how the petal or leaf shapes and stretches, how some leaves and petals use the grain to create the V shape, and how stamen will stand and form along the grain line. You can also use the crepe for a stem wrap, using the stretch of the grain to hug the wire tightly.



---

## LESSON 1: CUTTING CREPE PAPER

---

### FLOWER TEMPLATES

I always recommend that you print your templates onto **cardstock**. The heavier paper adds structure when cutting the crepe paper—once printed, pre-cut all shapes for each flower and save the templates in a labeled envelope. **NOTE:** it is essential to print your templates at **full size** rather than use the default "fit to paper" setting.

*For this class, I have included four versions of the flower templates.*

**COLOR TEMPLATES** are a great version to keep uncut and in your binder as a reference as you create each flower. These templates have detailed notes for each shape which is a great to refer back to as you work on your flowers.

**BLACK AND WHITE TEMPLATES** are an excellent option for working patterns. They can be precut with scissors and kept in envelopes with labels for each flower.

**PRINT-THEN-CUT TEMPLATES** are a great combo for those who have a cutting machine and only require a fine-point blade. For this version, print the PDF onto cardstock, then align the paper on your mat to the SVG file corner squares in your cutting machine software. **DO NOT USE** this version for cutting the crepe paper.

**SVG CUT FILE TEMPLATES** are for crafters who have a cutting machine with a **rotary blade** and are experienced with cutting crepe paper on their machines. Some pieces are not included in the SVG as they are best cut by hand. So refer to the PDF templates to ensure you have cut all of your crepe paper pieces. See **page 5** of this lesson for a detailed steps on using the SVG files.



**A CRAFTER'S GUIDE TO CRICUT MAKER**

**A CRAFTER'S GUIDE TO SILHOUETTE CAMEO**

Available in the Craft Academy of our site. These courses offer detailed instruction on software, settings and material cutting.

---

## LESSON 1: CUTTING CREPE PAPER

---

### BONUS LESSON : DIY DOUBLE-SIDED CREPE PAPER

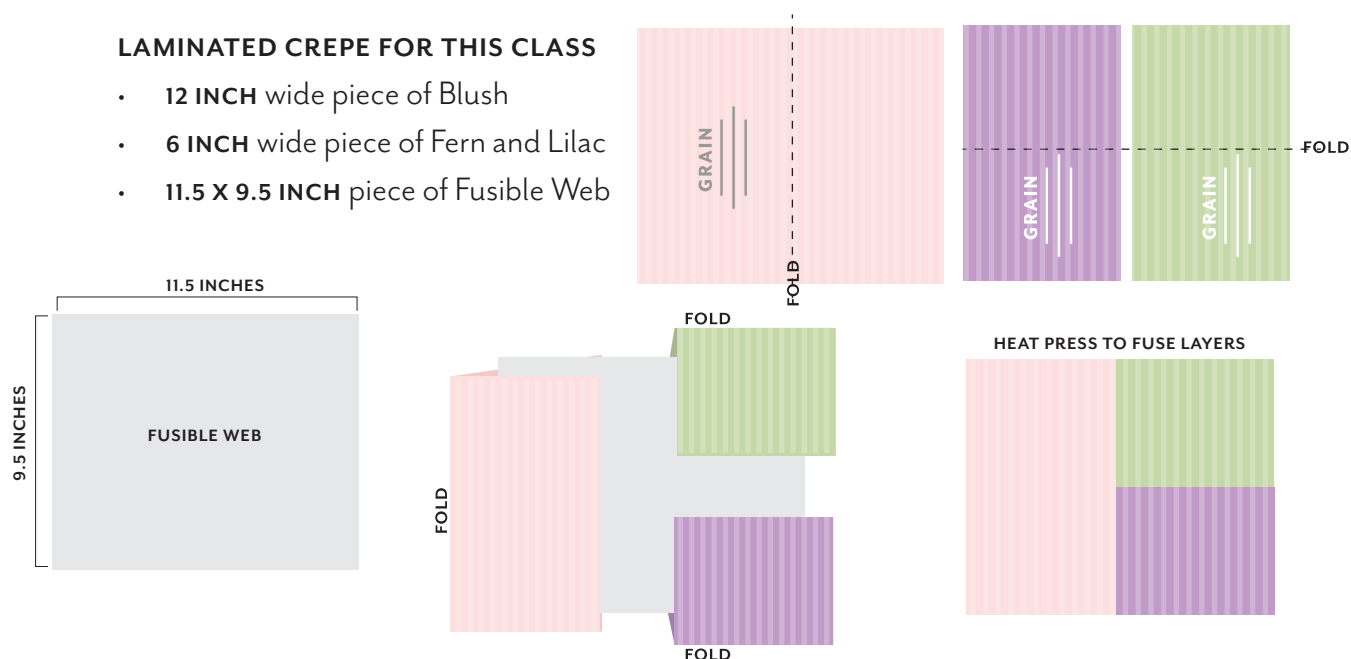
You can make custom double-sided crepe paper by laminating two pieces of extra-fine crepe paper with fusible web.

#### LAMINATING CREPE PAPER

1. Cut two matching sheets of crepe paper with aligned grain lines.
2. Cut a piece of fusible web slightly smaller than your crepe paper.
3. Place the web between the two sheets of crepe paper, ensuring that the web is not peeking out of any edges. If needed, cover your edges with strips of plain paper or a pressing cloth to ensure you do not transfer the web to your iron or ironing surface.
4. Using a dry iron or Easy Press at 350-400 degrees Fahrenheit and an ironing board or tabletop ironing mat, press and heat the whole surface of the paper and web for 30-45 seconds. I recommend moving your iron to keep it from burning your paper.
5. Once cool, test the edge of your crepe paper to confirm complete fusion. If you see your layers pull apart, heat crepe layers again until fused.

#### LAMINATED CREPE FOR THIS CLASS

- 12 INCH wide piece of Blush
- 6 INCH wide piece of Fern and Lilac
- 11.5 X 9.5 INCH piece of Fusible Web



---

## LESSON 1: CUTTING CREPE PAPER

---

### LAYERING PAPER FOR CUTTING

When cutting by hand, you can maximize efficiency by cutting multiple layers of crepe paper. Then, use the mini clips to hold the layers and your template in place while you cut the shapes. Of course, I recommend using sharp craft or detail scissors.

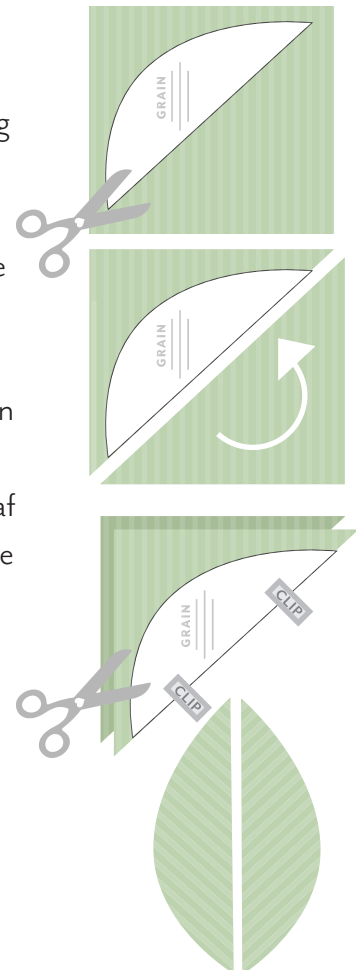
MAXIMUM LAYERS FOR HAND CUTTING CREPE PAPER		
EXTRA - FINE	DOUBLE - SIDED	HEAVY
6 LAYERS	4 LAYERS	3 LAYERS

### ANGLE CUTS

Cutting a half petal or leaf at an angle on the crepe, then gluing centers together over a wire spine, is an excellent method of using the pattern of the grain and the shape of the angle to create beautiful, realistic petals and leaves. Here are my simple steps to cutting V shaped petals and leaves.

1. Place your template on the crepe paper, matching the grain line mark with the grain line of the crepe
2. Trim the paper to be large enough for a second petal or leaf in the negative space and clip your template onto the crepe
3. Cut along the angled straight line of the template
4. Rotate the loose piece of crepe to align with the angle of the first, matching grain lines
5. Clip into place and complete cut of two layers

**PRO TIP:** If you are cutting double-sided crepe paper, cut a matching set starting with the other side/color facing up. You will then have two matching sets.



---

## LESSON 1: CUTTING CREPE PAPER

---

### USING THE CUTTING MACHINE

Cutting machines are excellent for crepe paper, but you must have a machine that holds a **rotary blade**. A fine point blade will only ruin the paper since it will drag to cut, stretching the crepe and pulling it off the mat, whereas a rotary blade rolls over the crepe and presses down to cut.

#### UPLOAD SVG FILES TO CRICUT:

1. Download the file to computer
2. Double-click to unzip the file
3. From machine software, upload the unzipped file
4. Read over the designer notes then hide notes layer
5. Press the make it button to view each mat
6. Increase the number of project copies if needed
7. Arrange petals or leaves to maximize mat (do not rotate any templates)
8. Hide any excess pieces that you do not want to cut
9. Click to proceed to cut settings

#### CRICUT CUT SETTINGS

EXTRA-FINE CREPE PAPER	
SETTING	PRESSURE
CREPE PAPER	DEFAULT

DOUBLE-SIDED CREPE PAPER	
SETTING	PRESSURE
COTTON	DEFAULT

HEAVY CREPE PAPER	
SETTING	PRESSURE
COTTON	MORE

*NOTE: These settings may vary for each machine, blade use, and software updates. We recommend you test cut a small area before cutting a full mat of crepe paper*

#### CUTTING MAT TIPS

1. Cut your crepe paper to the width of the mat
2. Place the crepe paper onto the mat with the grain vertically
3. Use a brayer to press the paper securely onto the mat
4. For additional support, tape the edges of the crepe with washi or masking tape to keep any edges from catching on the machine
5. Once cut, remove the crepe paper pieces using needle-nose tweezers